



## ZCV34/39/42

ZERO CLEARANCE **DIRECT VENT** GAS FIREPLACE



THE ULTIMATE IN DESIGN, ENGINEERING & QUALITY

ZCV39NH Zero Clearance Direct Vent Gas Fireplace Natural Gas, LOGF3 Split Oak Log Set, ZCV39RLT Refractory Brick Liner – Traditional and ZCV39S1BL Surround – Hearth Mount.



## FEATURES

ZCV34/39/42

### STANDARD FEATURES

- Millivolt or IPI valve system allows operation during a power failure with Hi/Low heat and flame adjustment
- Safety Screen Barrier

### OPTIONAL FEATURES

#### Fan Kit

Heat activated with variable speed control

#### Picture Frame Surrounds

##### ZCV34 Surrounds – Black

- Hearth Mount 3" Wide (Covers 34 <sup>7</sup>/<sub>8</sub>" W x 30 <sup>3</sup>/<sub>4</sub>" H)
- Picture Frame 4" Wide (Covers 36 <sup>5</sup>/<sub>8</sub>" W x 33 <sup>3</sup>/<sub>8</sub>" H)
- Picture Frame 1 <sup>11</sup>/<sub>16</sub>" Wide (Covers 31 <sup>1</sup>/<sub>16</sub>" W x 28 <sup>3</sup>/<sub>4</sub>" H)

##### ZCV39 Surrounds – Black

- Hearth Mount 4" Wide (Covers 40 <sup>5</sup>/<sub>8</sub>" W x 35" H)
- Picture Frame 4" Wide (Covers 40 <sup>5</sup>/<sub>8</sub>" W x 37" H)
- Picture Frame 1 <sup>5</sup>/<sub>8</sub>" Wide (Covers 36 <sup>1</sup>/<sub>8</sub>" W x 32 <sup>1</sup>/<sub>2</sub>" H)

##### ZCV42 Surrounds – Black

- Hearth Mount 4" Wide (Covers 44 <sup>11</sup>/<sub>16</sub>" W x 38 <sup>1</sup>/<sub>8</sub>" H)
- Picture Frame 4" Wide (Covers 44 <sup>11</sup>/<sub>16</sub>" W x 40 <sup>1</sup>/<sub>8</sub>" H)
- Picture Frame 1 <sup>5</sup>/<sub>8</sub>" Wide (Covers 40 <sup>3</sup>/<sub>16</sub>" W x 35 <sup>5</sup>/<sub>8</sub>" H)

#### Glass Tray

Ember Glass – Bronze (ZCV39/42 only)

#### Accent Lighting

For use with the Glass Tray (ZCV39/42 only)

#### Log Set

LOGF3 Log Set (ZCV39/42 only), LOGC44 Log Set (ZCV34 only)

#### Porcelain Reflective Liner

#### Brick Refractory Liners

Traditional, Herringbone, Red Herringbone (ZCV39 only), and Stacked (ZCV39/42 only)

#### Thermostat

wall mount thermostat or programmable thermostat

#### Remote Control

Thermostat on/off, Thermostat on/off modulating, Thermostat on/off modulating and fan control

#### Vented Chase

front grill or side grills

#### Wall Mount Battery Holder (WMBH):

The battery holder provides power to the IPI system in case of power failures. Locating the battery holder outside of the fireplace (wall mount), provides a convenient and accessible location for battery installation and removal.



## ZCV34

ZERO CLEARANCE **DIRECT VENT** GAS FIREPLACE

### MODEL

**Fuel**  
**Gas Control**  
**Input Max.**  
**Input Min.**  
**FE (P.4.1-15)**  
**Viewing Area**  
**Venting\*\***

**ZCV34LP**  
**ZCV34LPE**

Propane  
Millivolt / IPI  
18,000 BTU  
14,000 BTU  
58.67% / 61.17%  
28 <sup>5</sup>/<sub>8</sub>" W x 25 <sup>3</sup>/<sub>8</sub>" H  
4"/7" Flex or 4 x 6 <sup>5</sup>/<sub>8</sub>"

**ZCV34LPH**  
**ZCV34LPHE**

Propane  
Millivolt / IPI  
18,000 BTU  
14,000 BTU  
66.38% / 69.25%  
28 <sup>5</sup>/<sub>8</sub>" W x 25 <sup>3</sup>/<sub>8</sub>" H  
Hard Pipe\* or Power Vent

### MODEL

**Fuel**  
**Gas Control**  
**Input Max.**  
**Input Min.**  
**FE (P.4.1-15)**  
**Viewing Area**  
**Venting\*\***

**ZCV34N**  
**ZCV34NE**

Natural  
Millivolt / IPI  
19,000 BTU  
13,500 BTU  
53.49% / 56.14%  
28 <sup>5</sup>/<sub>8</sub>" W x 25 <sup>3</sup>/<sub>8</sub>" H  
4"/7" Flex or 4 x 6 <sup>5</sup>/<sub>8</sub>"

**ZCV34NH**  
**ZCV34NHE**

Natural  
Millivolt / IPI  
19,000 BTU  
13,500 BTU  
63.25% / 66.45%  
28 <sup>5</sup>/<sub>8</sub>" W x 25 <sup>3</sup>/<sub>8</sub>" H  
Hard Pipe\* or Power Vent

\* Approved with Kingsman Flex Vent, Mg Duravent-Direct Vent Pro Direct Vent System, Amerivent Direct Vent Pipe System, Selkirk Direct-Temp Venting. This appliance is also approved with Kingsman (Pvh58) Horizontal Power Vent Termination.

\*\* Vented Chase Option (see installation manual).



ZCV34NH, LOGC44 Split Oak Log Set, ZCV34RRH Refractory Brick Liner – Herringbone.



THE ULTIMATE IN DESIGN, ENGINEERING & QUALITY



**The ultimate in Zero Clearance Direct Vent Fireplaces  
for new home construction or renovation, and your best  
choice for installation anywhere throughout your home.**







## ZCV39/42

ZERO CLEARANCE **DIRECT VENT** GAS FIREPLACE

ZCV39NH Zero Clearance Direct Vent Gas Fireplace Natural Gas, LOGF3 Log Set, ZCV39RLS Refractory Stacked Brick Liner

### ZCV39

#### MODEL

Fuel  
Gas Control  
Input Max.  
Input Min.  
FE (P.4.1-15)  
Viewing Area  
Venting\*\*

#### ZCV39LP ZCV39LPE

Propane  
Millivolt / IPI  
25,000 BTU  
20,000 BTU  
52.35% / 54.24%  
33" W x 28 5/8" H  
4"/7" Flex or 4 x 6 5/8"

#### ZCV39LPH ZCV39LPHE

Propane  
Millivolt / IPI  
29,000 BTU  
23,000 BTU  
66.82% / 68.65%  
33" W x 28 5/8" H  
Hard Pipe\* or Power Vent

#### MODEL

Fuel  
Gas Control  
Input Max.  
Input Min.  
FE (P.4.1-15)  
Viewing Area  
Venting\*\*

#### ZCV39N ZCV39NE

Natural  
Millivolt / IPI  
25,000 BTU  
16,750 BTU  
52.35% / 54.24%  
33" W x 28 5/8" H  
4"/7" Flex or 4 x 6 5/8"

#### ZCV39NH ZCV39NHE

Natural  
Millivolt / IPI  
28,000 BTU  
19,000 BTU  
63.81% / 66.17%  
33" W x 28 5/8" H  
Hard Pipe\* or Power Vent

### ZCV42

#### MODEL

Fuel  
Gas Control  
Input Max.  
Input Min.  
FE (P.4.1-15)  
Viewing Area  
Venting\*\*

#### ZCV42LP ZCV42LPE

Propane  
Millivolt / IPI  
25,000 BTU  
19,500 BTU  
52.86% / 54.95%  
37 1/8" W x 31 3/4" H  
4"/7" Flex or 4 x 6 5/8"

#### ZCV42LPH ZCV42LPHE

Propane  
Millivolt / IPI  
29,000 BTU  
23,000 BTU  
66.65% / 68.77%  
37 1/8" W x 31 3/4" H  
Hard Pipe\* or Power Vent

#### MODEL

Fuel  
Gas Control  
Input Max.  
Input Min.  
FE (P.4.1-15)  
Viewing Area  
Venting\*\*

#### ZCV42N ZCV42NE

Natural  
Millivolt / IPI  
25,000 BTU  
16,500 BTU  
52.86% / 54.95%  
37 1/8" W x 31 3/4" H  
4"/7" Flex or 4 x 6 5/8"

#### ZCV42NH ZCV42NHE

Natural  
Millivolt / IPI  
29,500 BTU  
20,000 BTU  
64.53% / 66.48%  
37 1/8" W x 31 3/4" H  
Hard Pipe\* or Power Vent

\* Approved with Kingsman Flex Vent, Mg Duravent-Direct Vent Pro Direct Vent System, Amerivent Direct Vent Pipe System, Selkirk Direct-Temp Venting. This appliance is also approved with Kingsman (Pvh58) Horizontal Power Vent Termination.

\*\* Vented Chase Option (see installation manual).



THE ULTIMATE IN DESIGN, ENGINEERING & QUALITY



ZCV39NH Zero Clearance Direct Vent Gas Fireplace Natural Gas, ZCV39GT Glass Tray, Z5GC Glass Media – ½" Bronze – 5 lbs (x3), ULK2 Universal Light Kit, ZCV39PL Porcelain Reflective Liner, ZCV39S1PFBL Surround – Picture Frame 4" Wide.



ZCV39NH, LOGF3 Split Oak Log Set, ZCV39RLH Refractory Brick Liner – Herringbone.



ZCV39NH, ZCV39GT Glass Tray, Z5GC Glass Media – ½" Bronze – 5 lbs (x3), ULK2 Universal Light Kit, ZCV39PL Porcelain Reflective Liner.



ZCV39NH, ZCV39GT Glass Tray, RBCB1 Cannonballs, ZCV39PL Porcelain Reflective Liner.

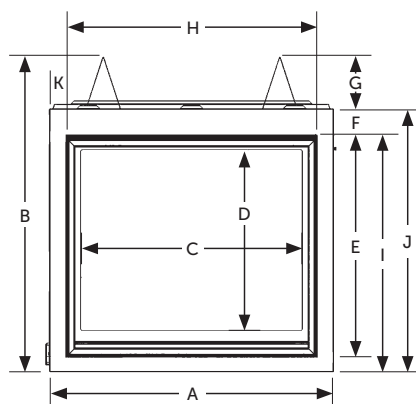


# ZCV34/39/42 SPECIFICATIONS

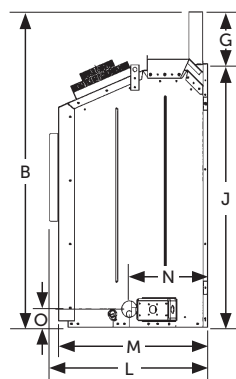
## FIREPLACE DIMENSIONS

	ZCV34	ZCV39	ZCV42
A	33"	39 3/8"	42 7/16"
B	36"	37 11/16"	40 7/8"
C	25 1/4"	29 5/8"	33 11/16"
D	20 3/4"	24 1/16"	27 3/16"
E	25 5/16"	29 3/8"	32 1/2"
F	3 1/16"	3 1/16"	3 1/16"
G	5 7/8"	3 3/16"	3 1/8"
H	28 1/2"	33"	37 1/16"
I	27 1/8"	31 3/8"	34 1/2"
J	30 1/8"	34 1/2"	37 5/8"
K	1 3/4"	3"	2 1/2"
L	18 1/16"	18 7/16"	18 7/16"
M	17 1/16"	18 3/8"	18 7/16"
N	8 15/16"	7 1/2"	7 9/16"
O	2 1/16"	2"	2"
P	19 11/16"	24 1/4"	27 7/8"

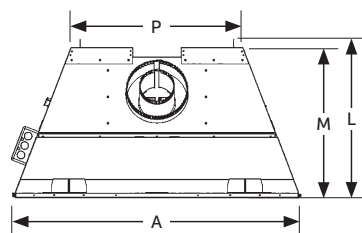
## FRONT VIEW



## SIDE VIEW



## TOP VIEW

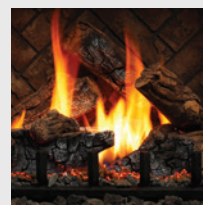


## FRAMING SPECIFICATIONS

	ZCV34	ZCV39	ZCV42
<b>Height</b>			
Actual	36"	37 11/16"	40 7/8"
Framing	36 1/8"	37 7/8"	41"
<b>Width</b>			
Actual	33"	39 3/8"	42 7/16"
Framing	33 1/4"	39 1/2"	42 1/2"
<b>Depth</b>			
Actual	18 1/16"	18 7/16"	18 7/16"
Framing	18 1/8"	18 1/2"	18 1/2"

## ACCESSORIES

### LOG SETS

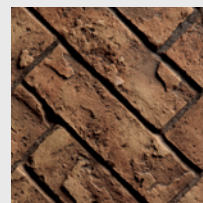


LOGF3  
Split Oak

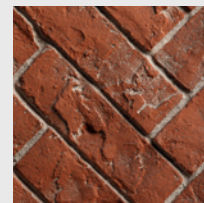


LOGC44  
Burnt Oak

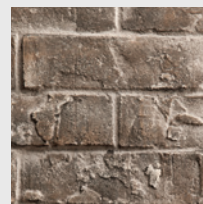
### BRICK LINERS



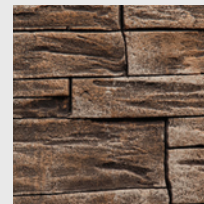
Herringbone  
RLH Brick Liner



Red Herringbone  
RRH Brick Liner



Traditional  
RLT Brick Liner



Stacked  
RLS Brick Liner

### MEDIA OPTIONS



Ember Glass  
Bronze



Cannonballs  
Multi-Colored



THE ULTIMATE IN DESIGN, ENGINEERING & QUALITY

# COOL TOUCH WALL TECHNOLOGY OPTIONS

The chase of the appliance may be vented to achieve Cool Touch Walls or reduced Mantel Clearances.

**Benefits to Cool Touch Wall Technology:**

- Wall above fireplace will be cooler, useful when installing TV's or Artwork above fireplace.
- In some instances combustible materials can be used to cover the face of the fireplace (please consult installation manual).
- Mantel height is lower than Non-Vented Chase.
- Chase must be vented at the top with a specified grill or opening size.
- If the chase bumps out into the room, side grills can be installed on each side of the chase.

**MINIMUM ENCLOSURE HEIGHTS**

Min. Enclosure Height

ZCV34	ZCV39	ZCV42
68"	72"	72"

**WITH OPENINGS (NO GRILLS)**

Minimum of 2" opening on all three sides of chase from ceiling

**WITH GRILLS (MIN. AIR FREE OPENINGS)**

Minimum Front Grill Opening

Minimum Grill Opening (Two Side Grills)

Grill Opening

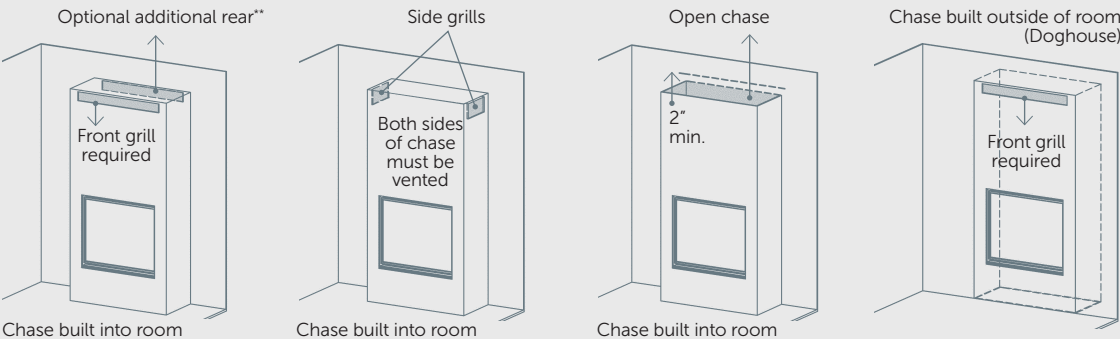
(Max. distance from top of enclosure)

Front Grill Part Number

Side Grills Part Number

31 3/8" x 3 1/4"	36 1/2 x 3 5/8	36 1/2 x 3 5/8
10 1/4" x 4 13/16"	12 1/2" x 6 1/8"	12 1/2" x 6 1/8"
3/4"	3/4"	3/4"
V34EG	V39EG	V39EG
V34EGS	V39EGS	V39EGS

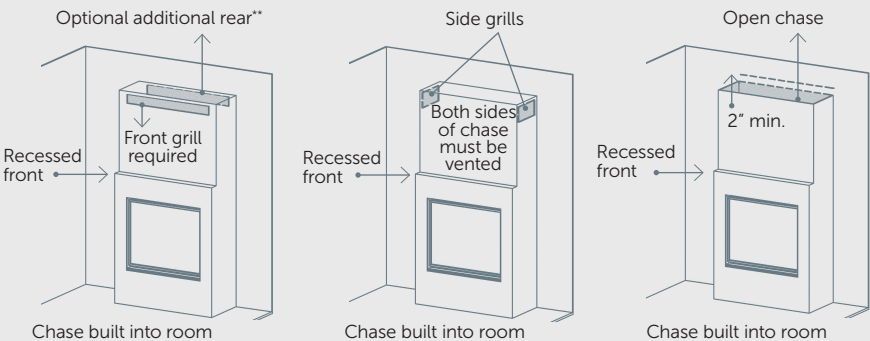
**FRAMED AS COOL TOUCH WALL TECHNOLOGY OPTION\***



Find all detailed  
ZCV24/39/42  
manuals here:



**RECESSED COOL TOUCH WALL TECHNOLOGY OPTION\***



\* NOTE: Ventilation Plates are removed from fireplace before it is installed into a Vented Chase.  
\*\* Consult manual for further information.

Minimum enclosure height for a vented chase is measured from bottom of fireplace, ventilation of minimum free air opening is required. Choose between our Enclosure Grills (Front or Sides) for adequate ventilation opening as stated in the manual. Grill or opening must meet minimum (as specified in the installation manual) of chase top/ceiling.





2340 Logan Avenue  
Winnipeg, Manitoba, Canada R2R 2V3  
Phone: (204) 632-1962 Fax: (204) 632-1960  
[www.kingsmanfireplaces.com](http://www.kingsmanfireplaces.com)

## ZCV34/39/42

ZERO CLEARANCE DIRECT VENT GAS FIREPLACE



### FOR CALIFORNIA RESIDENTS ONLY:

**WARNING!** This product can expose you to chemicals including Carbon Monoxide, that is an externally vented by-product of fuel consumption, which is [are] known to the State of California to cause birth defects or other reproductive harm. For more information, visit [www.P65Warnings.ca.gov](http://www.P65Warnings.ca.gov).



ZCV39NH Zero Clearance Direct Vent Gas Fireplace Natural Gas, ZCV39GT Glass Tray, RBCB1 Cannonballs, ZCV39PL Porcelain Reflective Liner, ZCV39S2PFBL Surround – Picture Frame 1 5/8" Wide.



\*Components may have to be ordered separately to create a complete unit. Discuss with your local Kingsman dealer for clarification. Kingsman Fireplaces maintains a program of continuous testing, refinement and improvements of all its products. Some aspect of units shown here may be changed at any time without notice or obligation.



CRAFTED ENTIRELY IN CANADA, EACH KINGSMAN FIREPLACE IS BUILT TO THE HIGHEST STANDARDS AND MADE TO LAST.

Canada

**ENERGUIDE**

Look for the **EnerGuide**  
Gas Fireplace Energy  
Efficiency Rating in this brochure

Based on CSA P.4.1-15

Printed in Canada  
05/2025 – B080